

Once "Wi2 Connect" is installed, logging in to "Wi2 300" is straight forward

Select " Wi2 Connect Download" from either "My Page "(1) or from the following URL (2)

URL : <http://300.wi2.co.jp> 2

1 My Page



2

<http://300.wi2.co.jp>
Usage Instructions page,
STEP 4



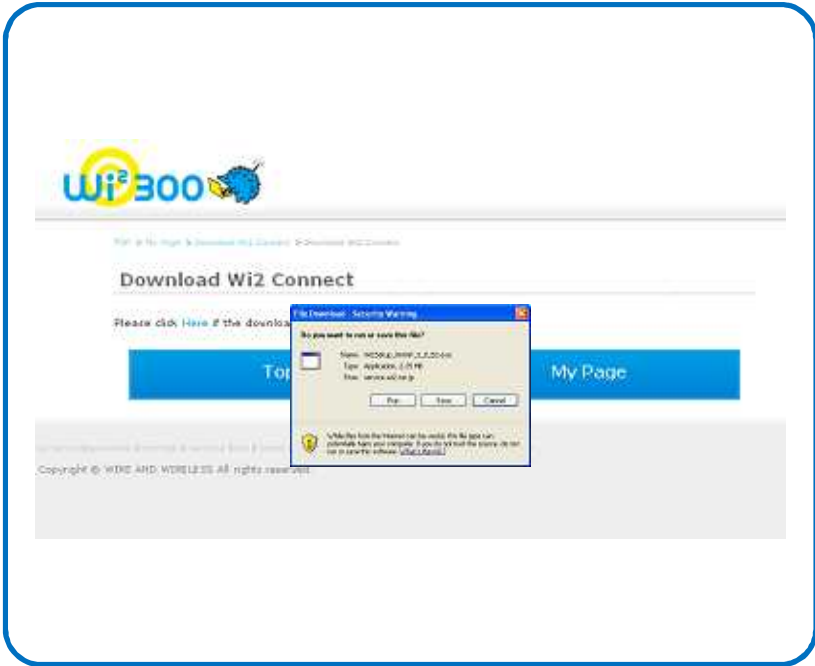


**"Wi2 Connect" download screen appears.
Select "WindowsXP/Vista" then click " Download Wi2 Connect".**

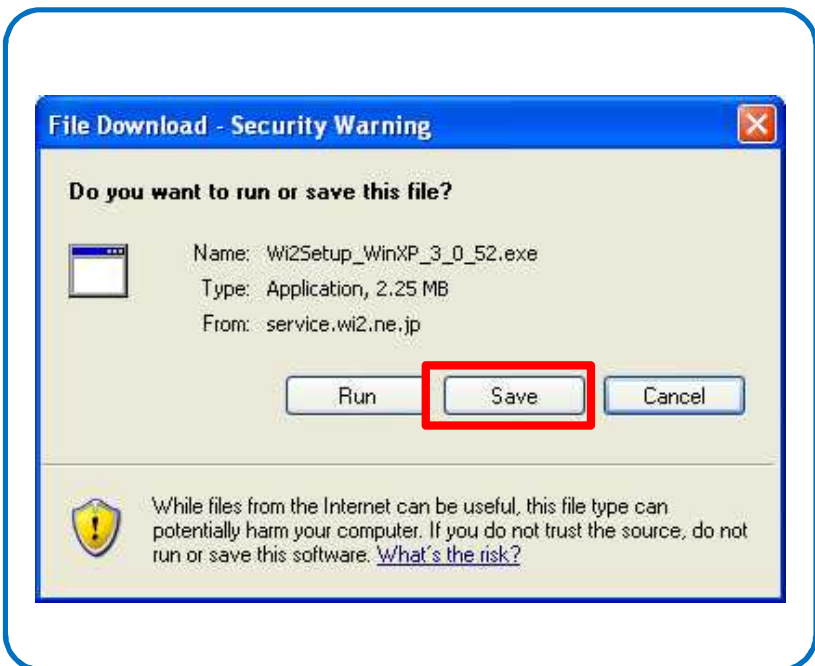


This screen will not be displayed if you selected method 2 from the previous page.

PC (WinXP • Vista) Installation Instructions

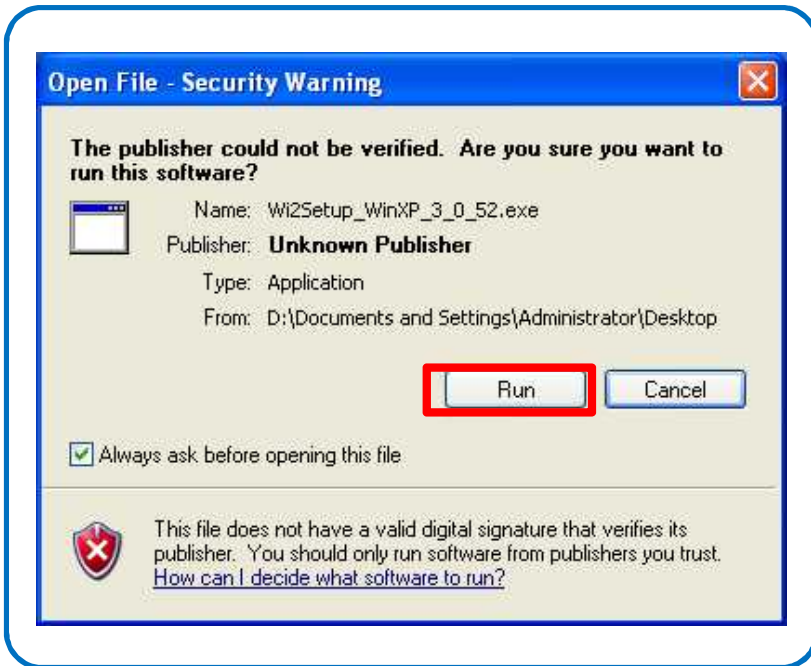


The file will start downloading.

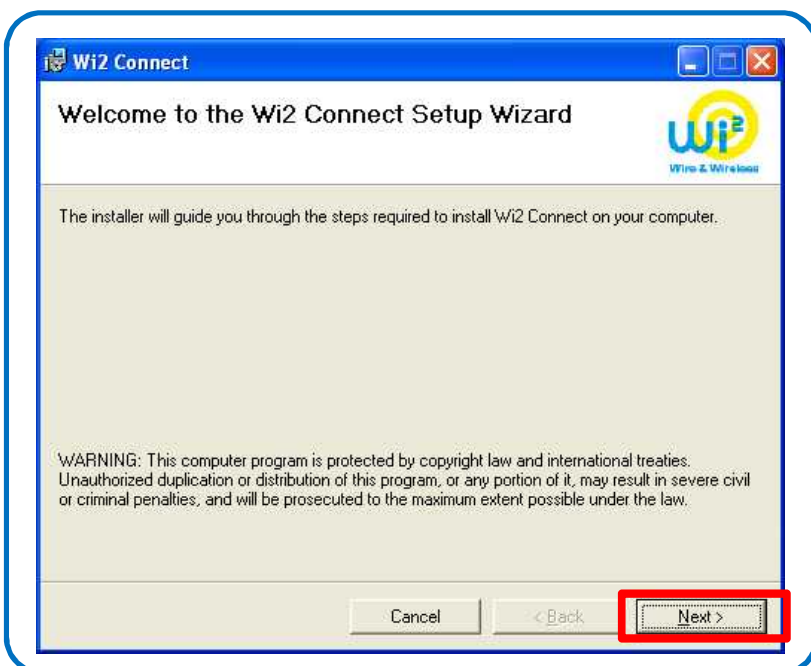


Save the file to your desired location.

PC (WinXP • Vista) Installation Instructions

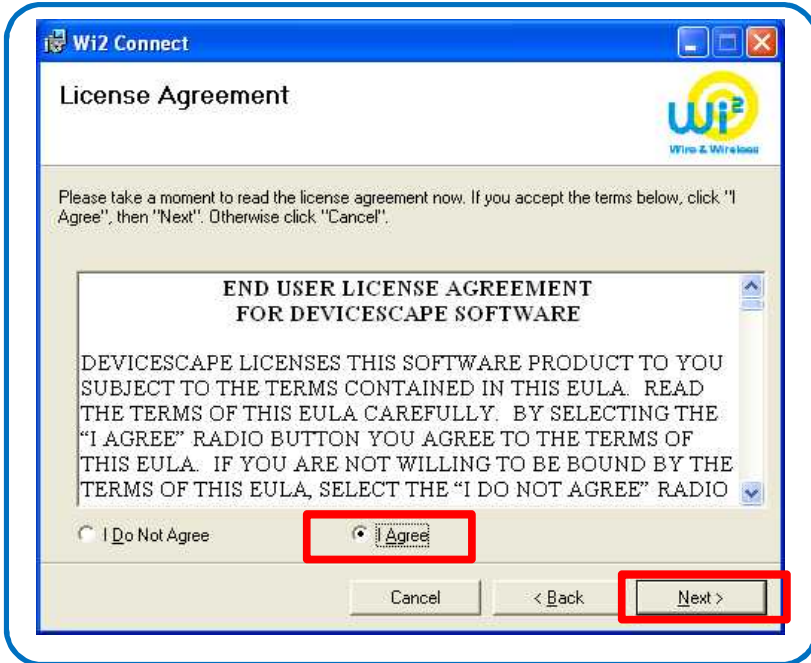


**Installation of "Wi2 Connect".
Run the downloaded file.**

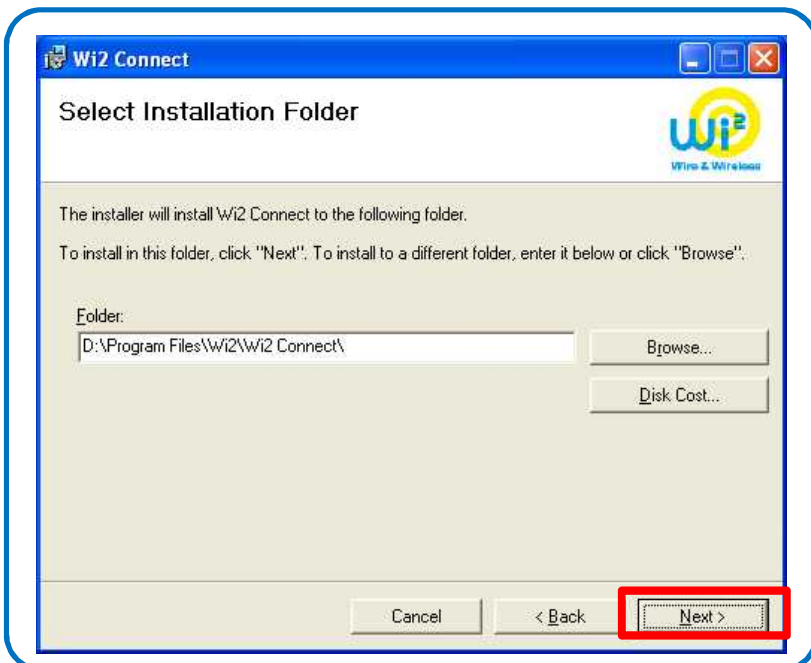


**The installer starts.
Click "Next".**

PC (WinXP • Vista) Installation Instructions

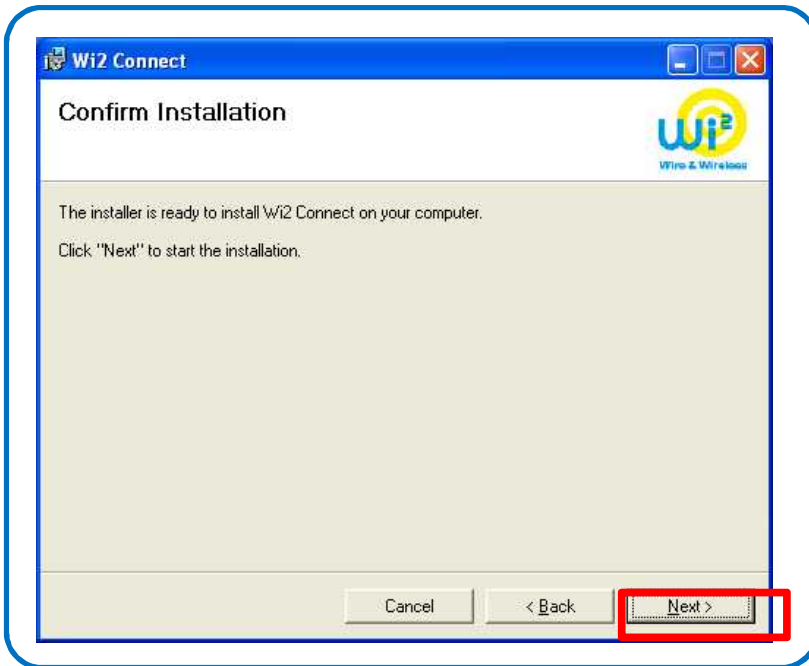


The license agreement will appear. Select "I Agree" and click "Next".

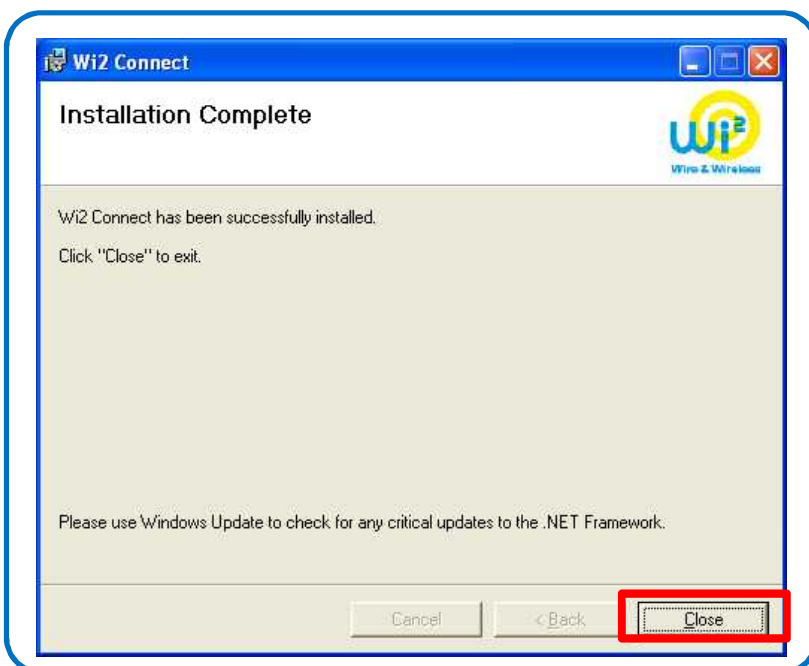


The folder selection screen appears. Click "Next".

PC (WinXP • Vista) Installation Instructions



**Final installation screen appears.
Click "Next".
The installation will start.**

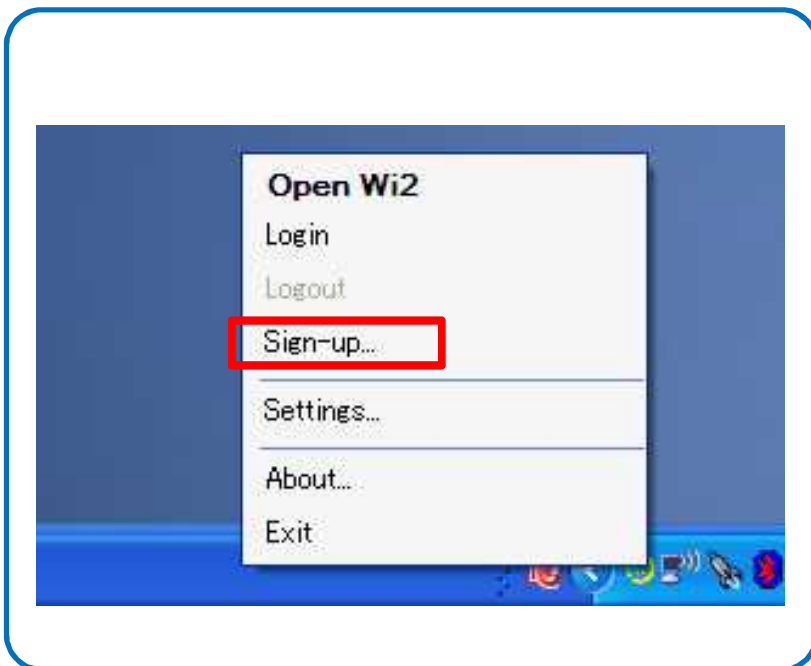


**Installation is complete.
Click "Close" to exit the installer.**

PC (WinXP • Vista) Installation Instructions



Please check that "Wi2 Connect" icon appears on the Task bar.



Right-click the icon, then select "Sign-up"

PC (WinXP • Vista) Installation Instructions



While you are logged-in, it is not necessary to enter ID and password.

Starting a browser, "Wi2 Connect" registration screen will be displayed.

Enter your login ID and password, then click "register,".

Registration is complete.

Close the browser.